

Restructuring Cell, Corporate Office,
7th Floor, Bharat Sanchar Bhavan,
Janpath, New Delhi-110001
Tel No 23734347 / 23037320



भारत संचार निगम लिमिटेड
(भारत सरकार का उपक्रम)
BHARAT SANCHAR NIGAM LIMITED
(A Govt. of India Enterprise)

No:-4-2/2022-Restructuring

Dated:- 22.11.2022

To

All CGMs (Territorial / Non Territorial Circles) BSNL
CVO BSNL CO

Sub:- Organizational Structure of BharatNet Vertical in BSNL -Regarding.

As the Merger of BBNL with BSNL has been approved, all the functions being performed by BBNL are transferred to BSNL along with available staff. A separate vertical under Director (CFA) has been created in BSNL Corporate Office and Circles to handle all the BharatNet Functions. Separate Business Area units have been created in the Circles directly under the administrative control of the Circle CGMs.

1. BharatNet Organizational Structure (Corporate Office):

The BharatNet functions are broadly categorized as under:

- a. BharatNet Phase-I and Phase-II Project works in progress
- b. BharatNet Phase-II State Led Model Project
- c. PPP tendering and implementation
- d. BharatNet O&M
- e. BharatNet Utilization
- f. Miscellaneous and Coordination works
- g. Accounting
- h. Finance
- i. Taxation
- j. Outstanding Legal cases

There shall be separate GM/Sr GM/PGM for each of the above BharatNet functions in Corporate Office who shall report to Head, BharatNet Vertical. The same has been depicted in the attached Organizational Structure (Annexure-I).


2. **BharatNet Organizational Structure (Circles):** There shall be one or more than one PGM/GMs in the circle BharatNet BA unit as per the attached Organizational Structure (Annexure-I). The senior most among these PGMs/Sr.GMs/GMs shall be overall in-charge of BharatNet BA in the circle and will be BharatNet BA head. All other PGM/Sr.GM/ GMs, BharatNet shall report to BharatNet BA Head who will be under

administrative control of Telecom Circle CGM with 2nd reporting to Head, BharatNet Vertical in Corporate Office. PGM/Sr.GM/GMs, BharatNet shall be overall functional in-charge of BharatNet O&M and utilization in their respective areas. All the FT/ NEs and BA/OA level nodal officers shall be under the functional and administrative control of the BharatNet PGMs/Sr.GMs/GMs.

3. Only exception will be Phase I & II works being executed by BSNL which will continue the responsibility of concerned BA of BSNL to execute the work. O&M and utilization will be the responsibility of BharatNet BA post completion of project for which appropriate staff shall be posted by the concerned circle from the existing manpower.
4. **Network Engineers/ Field Technicians.** Present working 237 NEs and 1250 FTs shall continue to be hired on contract basis. Additional NEs and FTs shall be engaged with due justification and approval of USOF where number of GPs in any particular District/Block is very high.
5. **Office Support Staff:** Each of the functional PGMs/Sr.GMs/GMs at the Corporate Office and BharatNet BA in the circles shall be supported with the BSNL officers/officials to be posted for BharatNet O&M related works from the existing manpower strength, as per the attached Organizational Structure (Annexure-I). Each PGM/Sr.GM/GM shall be supported with One Office Assistant and One MTS/Helper. 2NEs and 2 FTs shall be deployed at BharatNet BA head level for store management and MIS works. One CAO/AO in each circle with 2 AO/JAO shall be posted for finance functions of Bharatnet under BharatNet BA. The consultants employed by BBNL on contract basis shall continue till BSNL officers are posted.
6. **NOC and GIS:** The sanctioned strength of 70 NOC engineers deployed on contract basis and 25 GIS engineers deployed by NIC shall be continued.
7. Separate accounting of BharatNet shall be ensured by BharatNet BA head in the circles.
8. BSNL Staff as per attached structure shall be posted by respective circles and by Personnel unit in Corporate Office.
9. The contractual staff shall be hired by respective circles and by Administration Unit of Corporate Office for NOC and Corporate Office through GeM.

10. The Responsibility of all the officers/staff –Network Engineers, Field Technicians, AGMs, SDEs shall not be restricted to operation and maintenance only but also cover utilization, planning, data collection and miscellaneous works both at Corporate/circle and field level.

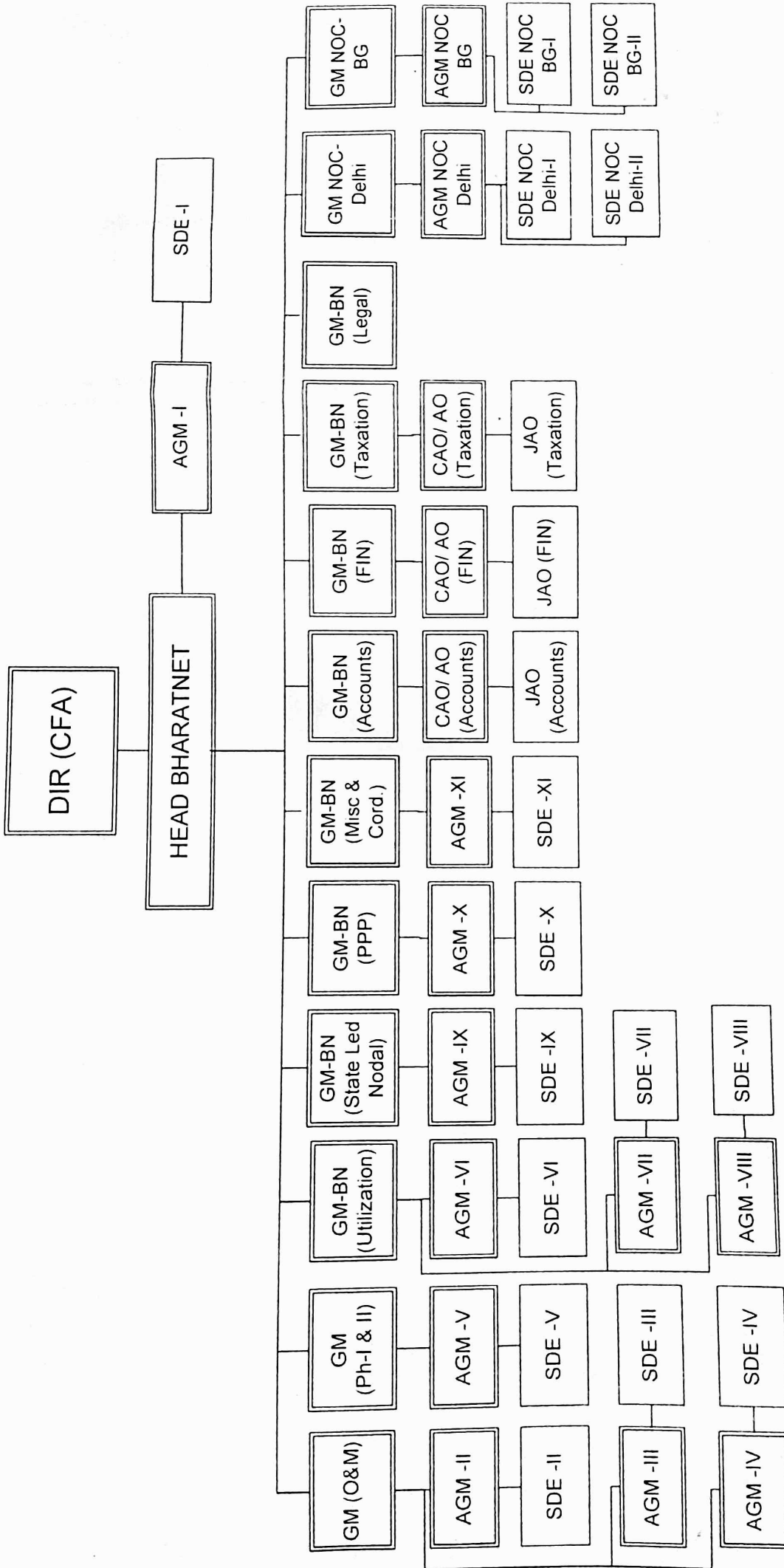
Encls: As above


22/11/22
(Anita Johri)
PGM (Restructuring/WS&I)

Copy for information to-

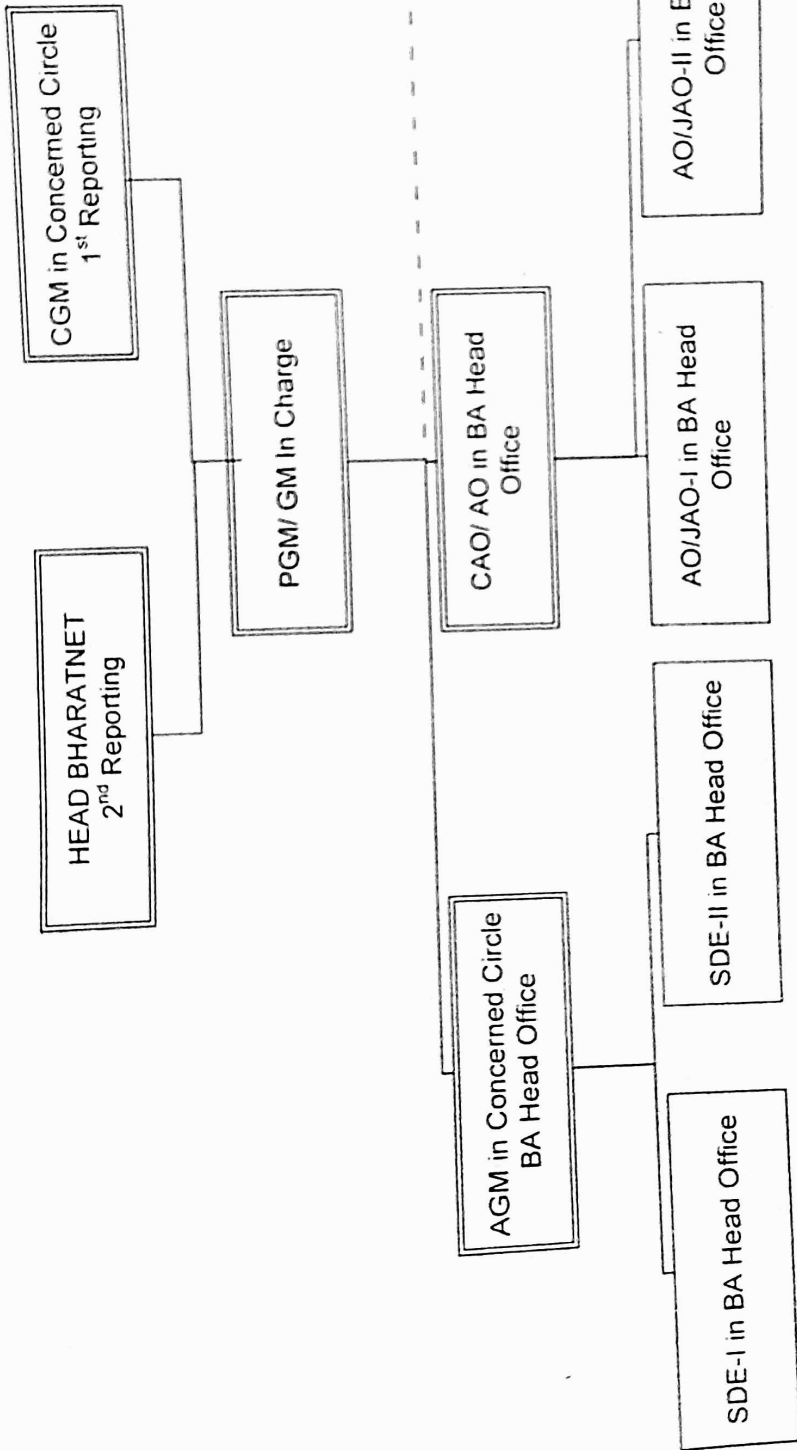
- 1) PS to CMD BSNL
- 2) PS to DIR(CFA)/ DIR(HR)/ DIR(CM) / DIR(EB)/ DIR(FIN)
- 3) PGM (Pers.)/ PGM (Estt.) BSNL CO
- 4) All the PGMs /Sr.GMs / GMs BSNL CO

Bharat Net Vertical, Corporate Office and NOC Structure



Bharat Net BA and Territorials BAs Structure (AGM/ SDE in field)

(AP, AS, CG, HP, JK, JHK, KR, NE-I, NE-II, OR, SKM, TEL, UK, WB Circles)

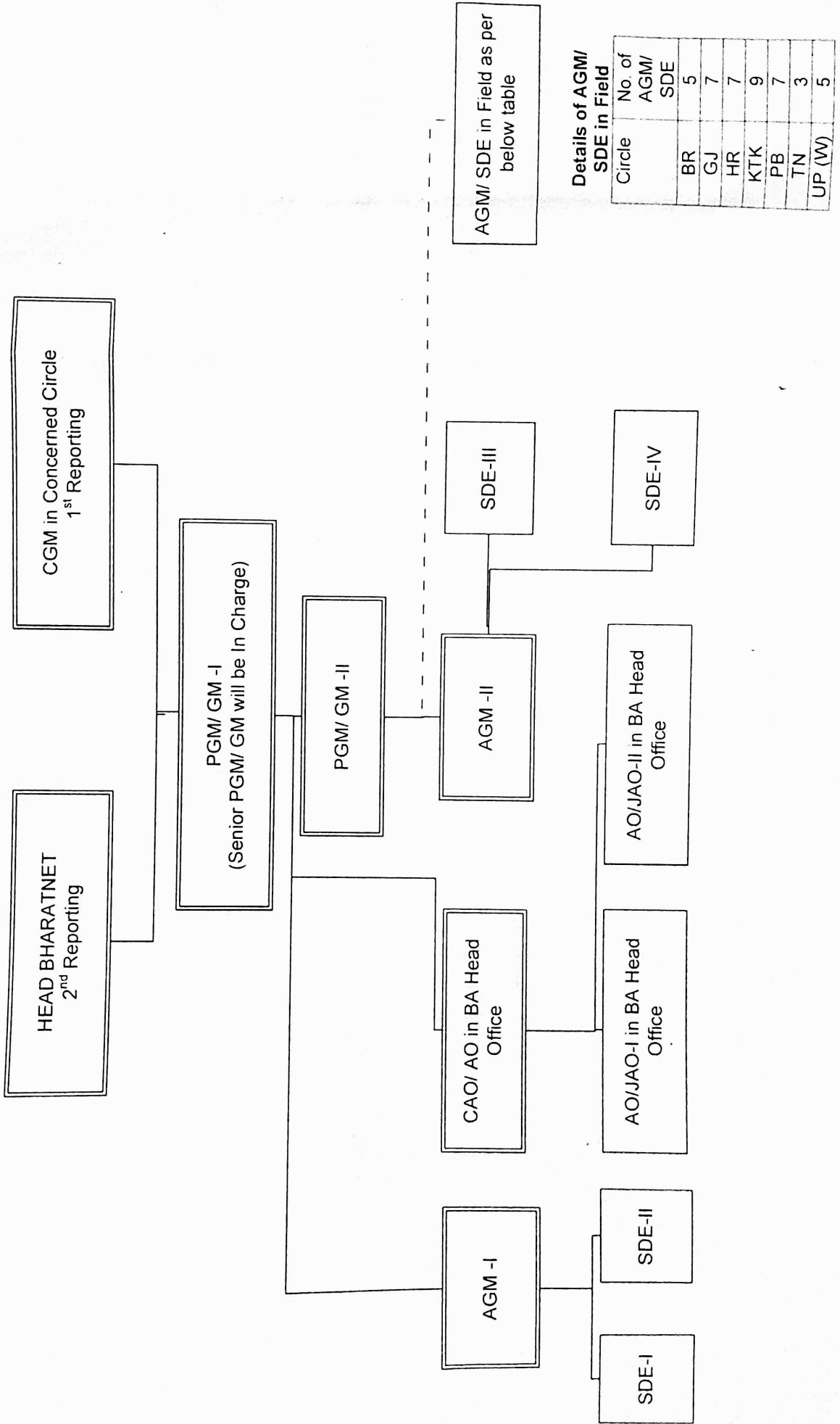


AGM/ SDE in Field as per below table

Circle	No of AGM/ SDE
AP	2
AS	6
CG	3
HP	3
JK	3
JHK	3
KR	11
NE-I	3
NE-II	3
OR	6
SKM	1
TEL	3
UK	3
WB	4

Bharat Net BA and Territorials BAs Structure (AGM/ SDE in field)

(BR, GJ, HR, KTK, PB, TN (Puducherry)/ AN, UP (W) Circles)



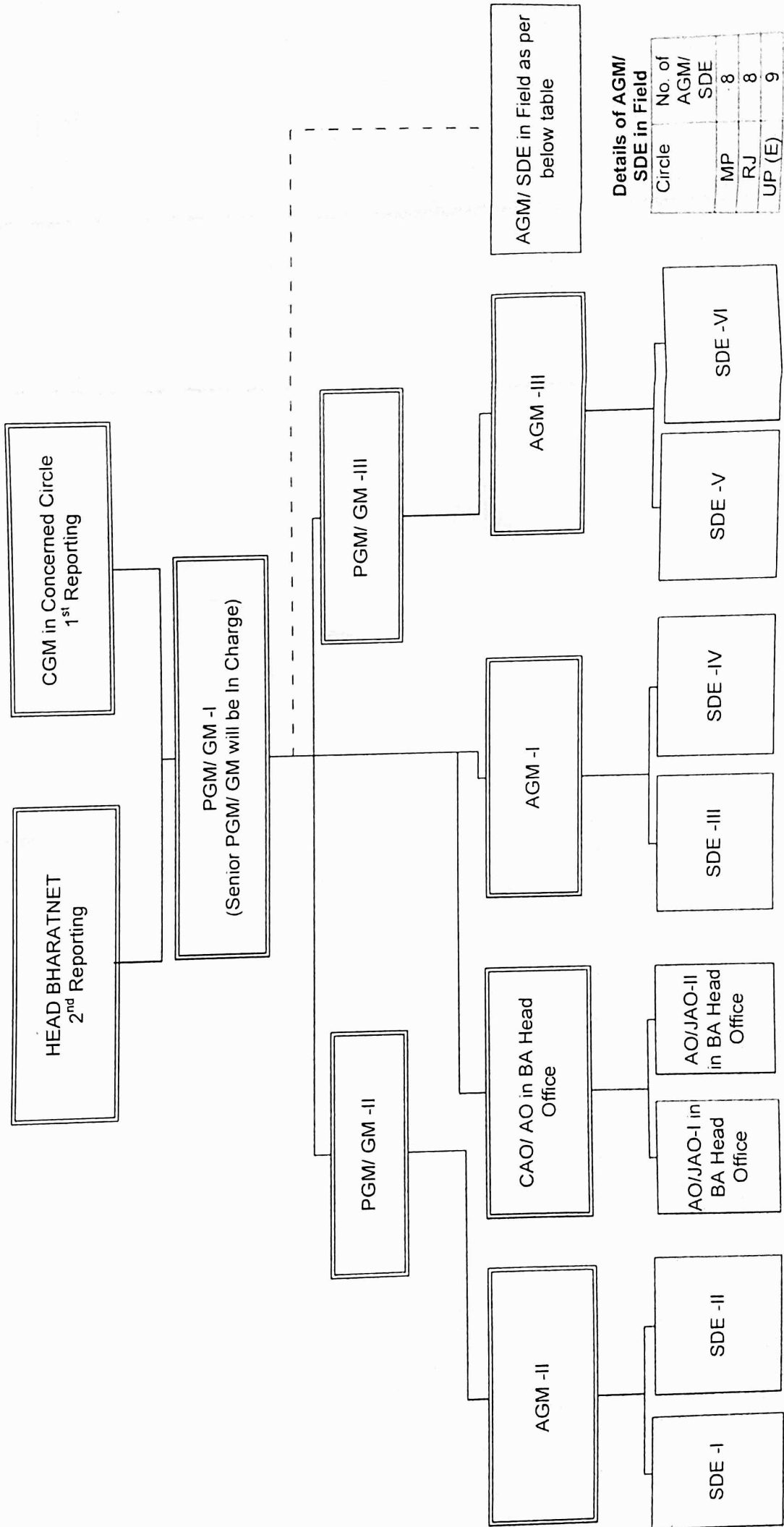
AGM/ SDE in Field as per below table

Details of AGM/ SDE in Field

Circle	No. of AGM/ SDE
BR	5
GJ	7
HR	7
KTK	9
PB	7
TN	3
UP (W)	5

Bharat Net BA and Territorials BAs Structure (AGM/ SDE in field)

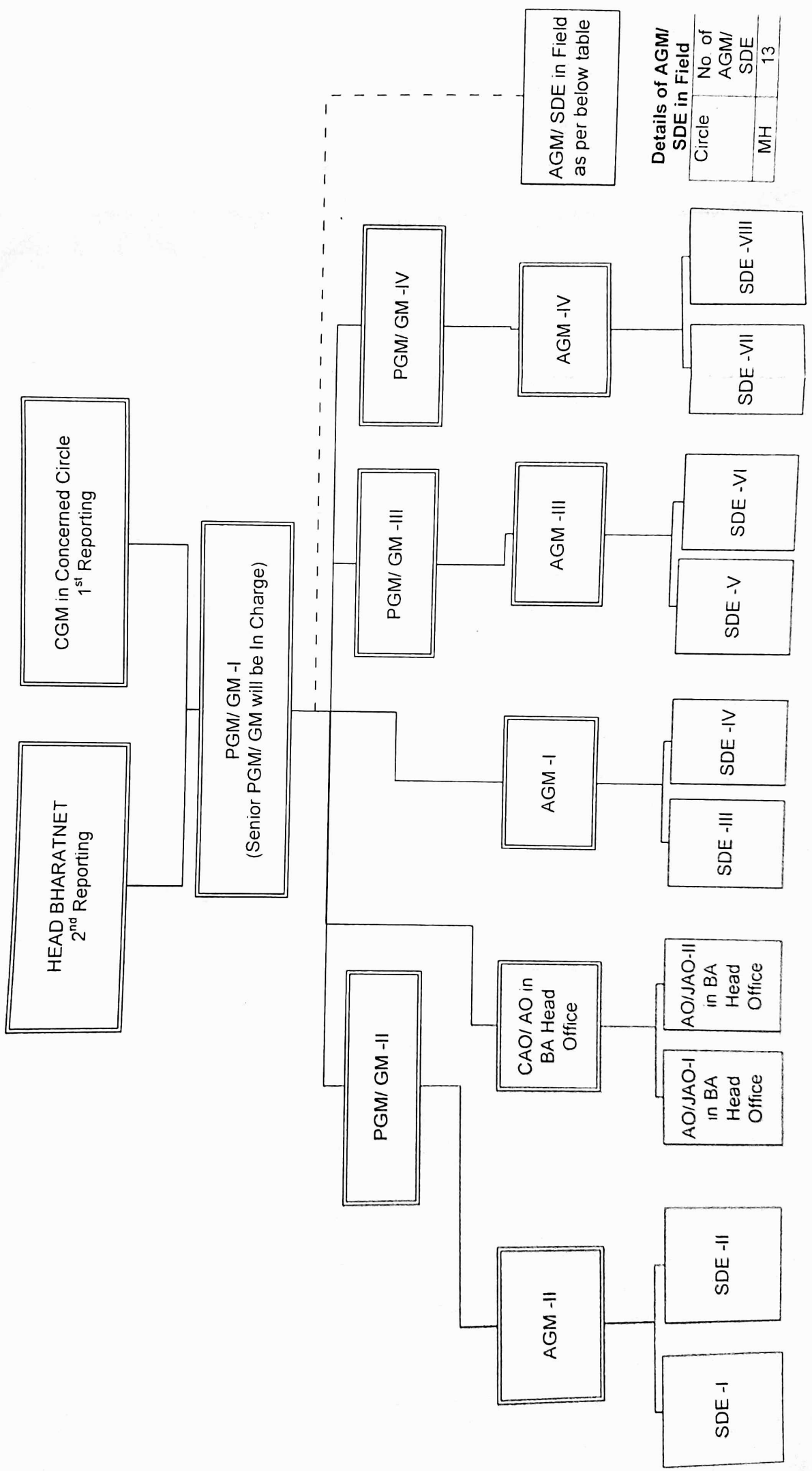
(MP, RJ, UP (E) Circles)



AGM/ SDE in Field as per below table

Details of AGM/ SDE in Field	
Circle	No. of AGM/ SDE
MP	8
RJ	8
UP (E)	9

Bharat Net BA and Territorials BAs Structure (AGM/ SDE in field)
(MH Circle)



AGM/ SDE in Field
as per below table

Details of AGM/ SDE in Field	
Circle	No of AGM/ SDE
MH	13